



International
Partnership for
Geothermal
Technology

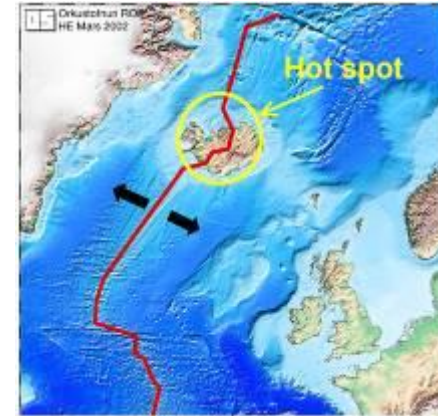
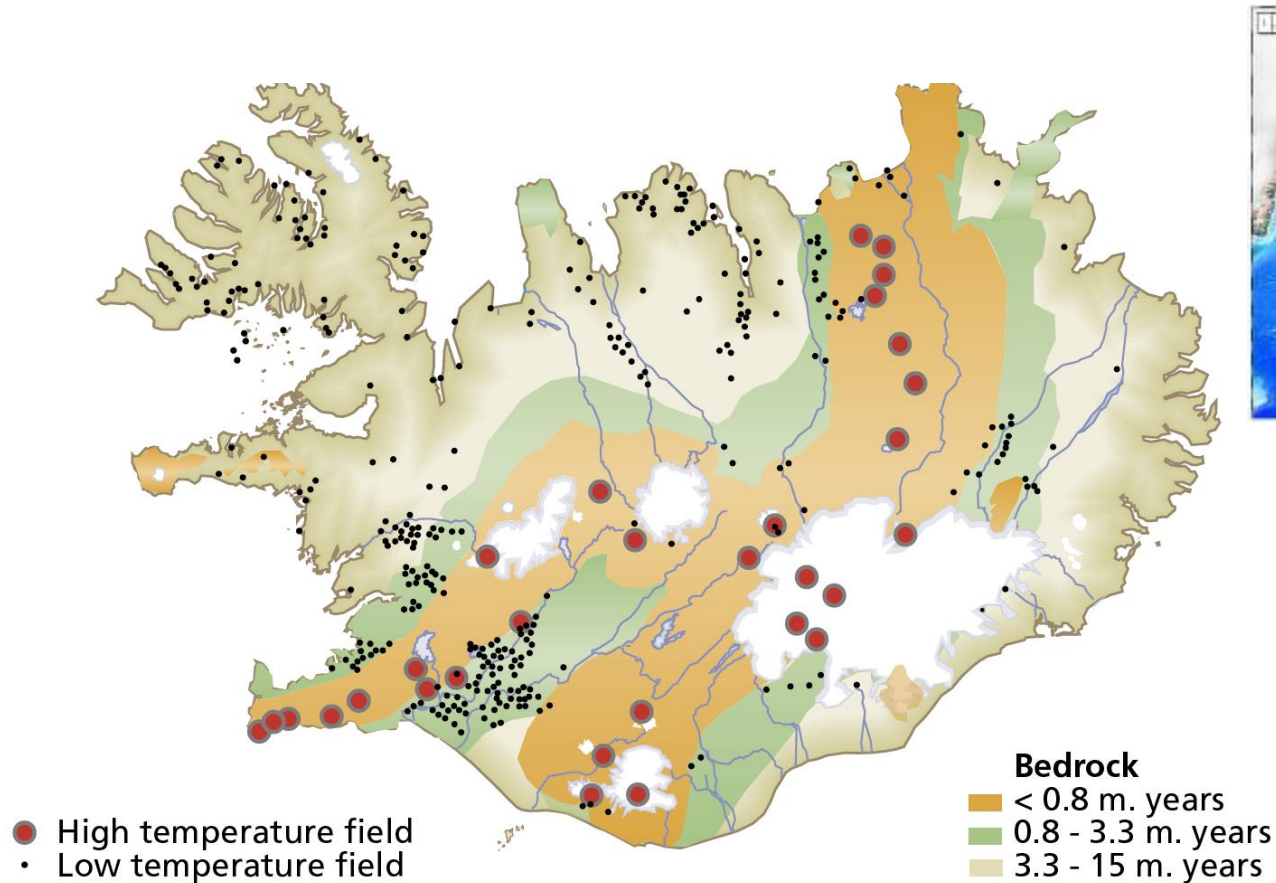
Reservoir Modeling Road Map for IPGT

- International Working Group on Reservoir Modeling
 - About ten reservoir scientists from around the world
 - Joint effort to direct R&D funds and identify collaboration opportunities across continents
 - Tasks under discussion is intended as our contribution
- Online workshop in USA March 18th 20:30 GMT
 - Live broadcast will be made available here... Bring some popcorn!

Terrestrial Energy Current and Stored Heat in Iceland



Geothermal Fields in Iceland



High and low temperature

In low temperature geothermal systems, temperatures in the uppermost 1,000 m may reach up to 150°C. In the high temperature fields, on the other hand, temperatures reach over 200°C at 1,000 m depth. High temperature geothermal areas are found within the active volcanic zone of Iceland.

Estimates of Energy Currents and Flow

